

*TM11-6625-660-20P

DEPARTMENT OF THE ARMY TECHNICAL MANUAL
ORGANIZATIONAL MAINTENANCE REPAIR PARTS AND SPECIAL
TOOLS LIST
FOR
TEST SET, NOISE LOADING AN/GRM-66
(NSN 6625-00-084-5469)

Headquarters, Department of the Army, Washington, DC
22 July 1976

Current as of 26 March 1976

REPORTING OF ERRORS

You can improve this manual by recommending improvements using DA Form 2028-2 (Test) located in the back of the manual. Simply tear out the self-addressed form, fill it out as shown on the sample, fold it where shown, and drop in in the mail.

If there are no blank DA Forms 2028-2 (Test) in the back of your manual, use the standard DA Form 2028 (Recommended Changes to Publications and Blank Forms) and forward to the Commander, US Army Electronics Command, ATTN: DRSEL-MA-Q, Fort Monmouth, New Jersey 07703.

In either case a reply will be furnished direct to you.

		Page	Illus Figure
Section	I. Introduction	1	
	II. Repairs parts list	7	
	00 Test Set Noise Loading AN/GRM-66	7	1
	01 Test Set Noise loading TS-2125/GRM-66	7	1
	0101 Oscillator (5A1) (No parts authorized)		
	0102 Noise Generator 1390B (5A2)	9	2
	0103 Amplifier AM-4932/U (See TM 11-5820-740-15 for parts)		
Section	III. Special tools list (Not applicable)		
	IV. National stock number and part number index	10	

***This manual supersedes so much of TM 11-6625-660-12, 24 October 1967, including all changes, as pertains to repair parts and special tools list.**

SECTION I INTRODUCTION

1. Scope

This manual lists repair parts and special tools required for performance of organizational maintenance of the AN/GRM-66.

2. General

This Repair Parts and Special Tools List is divided into the following sections:

a. **Section II. Repair Parts List.** A list of repair parts authorized for use in the performance of maintenance. The list also includes parts which must be removed for replacement of the authorized parts. Parts lists are composed of functional groups in ascending numerical sequence.

b. **Section III. Special Tools List.** Not applicable.

c. **Section IV. National Stock Number and Part Number Index.** A list, in ascending National item identification number (NIIN, last 9 digits) sequence, of all National stock numbers appearing in the listings, followed by a list, in alphabetic sequence, of all part numbers appearing in the listings. National stock number and part numbers are cross-referenced to each illustration figure and item number appearance.

3. Explanation of Columns

The following provides an explanation of columns found in the tabular listings:

a. **Illustration.** This column is divided as follows:

(1) **Figure number.** Indicates the figure number of the illustration in which the item is shown.

(2) **Item number.** The number used to identify each item called out in the illustration.

b. **Source, Maintenance, and Recoverability Codes (SMR).**

(1) **Source code.** Source codes are assigned to support items to indicate the manner of acquiring support items for maintenance, repair, or overhaul of end items. Source codes are entered in the first and second positions of the Uniform SMR code format as follows:

Code	Definition
PA	- Item procured and stocked for anticipated or known usage.
PD	- Support item, excluding support equipment, procured for initial issue or outfitting and stocked only for subsequent or additional initial issues or outfittings. Not subject to automatic replenishment.
XD	- A support item that is not stocked. When required, item will be procured through normal supply channels.

NOTE

Cannibalization or salvage may be used as a source of supply for any items source coded above except those coded XA, XD, and aircraft support items as restricted by AR700-42.

(2) **Maintenance code.** Maintenance codes are assigned to indicate the levels of maintenance authorized to USE and REPAIR support items. The maintenance codes are entered in the third and fourth positions of the Uniform SMR Code format as follows:

(a) The maintenance code entered in the third position will indicate the lowest maintenance level authorized to remove, replace, and use the support item. The maintenance code entered in the third position will indicate one of the following levels of maintenance:

Code	Application/Explanation
O	- Support item is removed, replaced, used at the organizational level.

(b) The maintenance code entered in the fourth position indicates whether the item is to be repaired and identifies the lowest maintenance level with the capability to perform complete repair (i.e., all authorized maintenance functions). This position will contain one of the following maintenance codes:

Code	Application/Explanation
H	- The lowest maintenance level capable of complete repair of the support item is the general support level.
D	- The lowest maintenance level capable of complete repair of the support item is the depot level.
Z	- Nonreparable No repair is authorized.

(3) **Recoverability code.** Recoverability codes are assigned to support items to indicate the disposition action on unserviceable items. The recoverability code is entered in the fifth position of the Uniform SMR Code format as follows:

Recoverability Codes	Definition
Z	- Nonreparable item. When unserviceable, condemn and dispose at the level indicated in position 3.
H	- Repairable item. When uneconomically repairable, condemn and dispose at the general support level.
D	- Repairable item. When beyond lower level repair capability, return to depot. Condemnation and disposal not authorized below depot level.

c. National Stock Number. Indicates the National stock number assigned to the item and will be used for requisitioning purposes.

d. Part Number. Indicates the primary number used by the manufacturer (individual, company, firm, corporation, or Government activity), which controls the design and characteristics of the item by means of its engineering drawings, specifications standards, and inspection requirements, to identify an item or range of items.

NOTE

When a stock numbered item is requisitioned, the repair part received may have a different part number than the part being replaced.

e. Federal supply Code for Manufacturer (FSCM). The FSCM is a S-digit numeric code listed in SB 708-42 which is used to identify the manufacturer, distributor, or Government agency, etc.

f. Description. Indicates the Federal item name and if required, a minimum description to identify the item.

g. Unit of Measure (U/M). Indicates the standard of the basic quantity of the listed item as used in performing the actual maintenance function. This measure is expressed by a two-character alphabetical abbreviation (e.g., ea, in, pr, etc.). When the unit of measure differs from the unit of issue, the lowest unit of issue that will satisfy the required units of measure will be requisitioned.

h. Quantity Incorporated in Unit. Indicates the quantity of the item used in the breakout shown on the illustration figure, which is prepared for a functional group, subfunctional group, or an assembly.

4. Special Information

The following publications pertain to the AN/CRM-66 and its components:

TM11-5820-740-15, Amplifiers, Audiofrequency-Radiofrequency

AM-4826/U and AM-4932/U.

TM11-6625-660-12, Test Set Loading AN/CRM-66.

5. How to Locate Repair Parts

a. When National stock number or part number is unknown.

(1) *First.* Using the table of contents, determine the functional group within which the repair part belongs. This is necessary since illustrations are prepared for functional groups and listings are divided into the same groups.

(2) *Second.* Find the illustration covering the functional group to which the repair part belongs.

(3) *Third.* Identify the repair part on the illustration and note the illustration figure and item number of the repair part.

(4) *Fourth.* Using the Repair Parts Listing, find the figure and item number noted on the illustration.

b. When National stock number or part number is known.

(1) *First.* Using the Index of National Stock Numbers and Part Numbers, find the pertinent National stock number or part number. This index is in ascending NIIN sequence followed by a list of part numbers in ascending alphameric sequence, cross-referenced to the illustration figure number and item number.

(2) *Second.* After finding the figure and item number in the repair parts list.

6. Abbreviations

Not applicable

(Next printed page is 5)

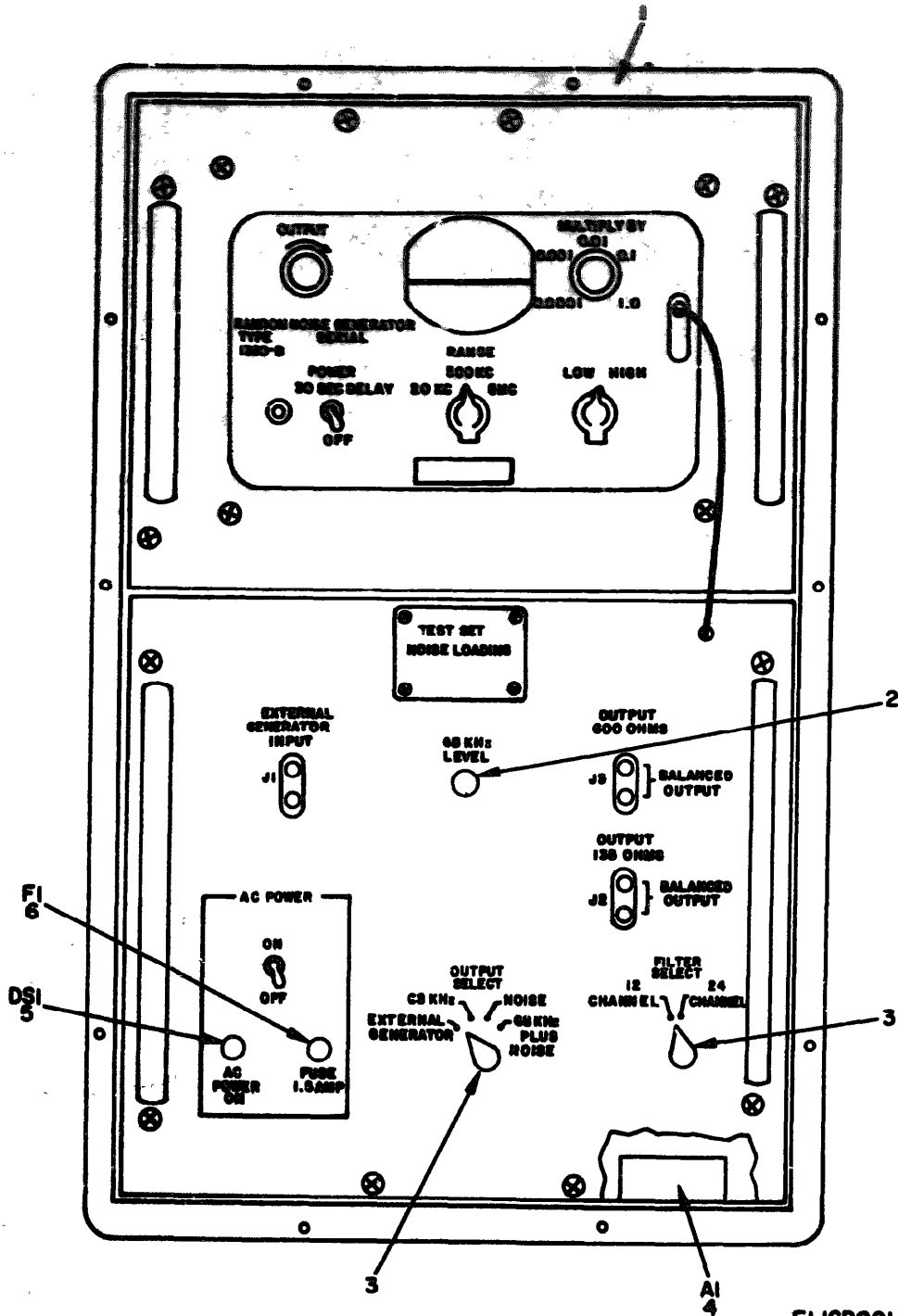
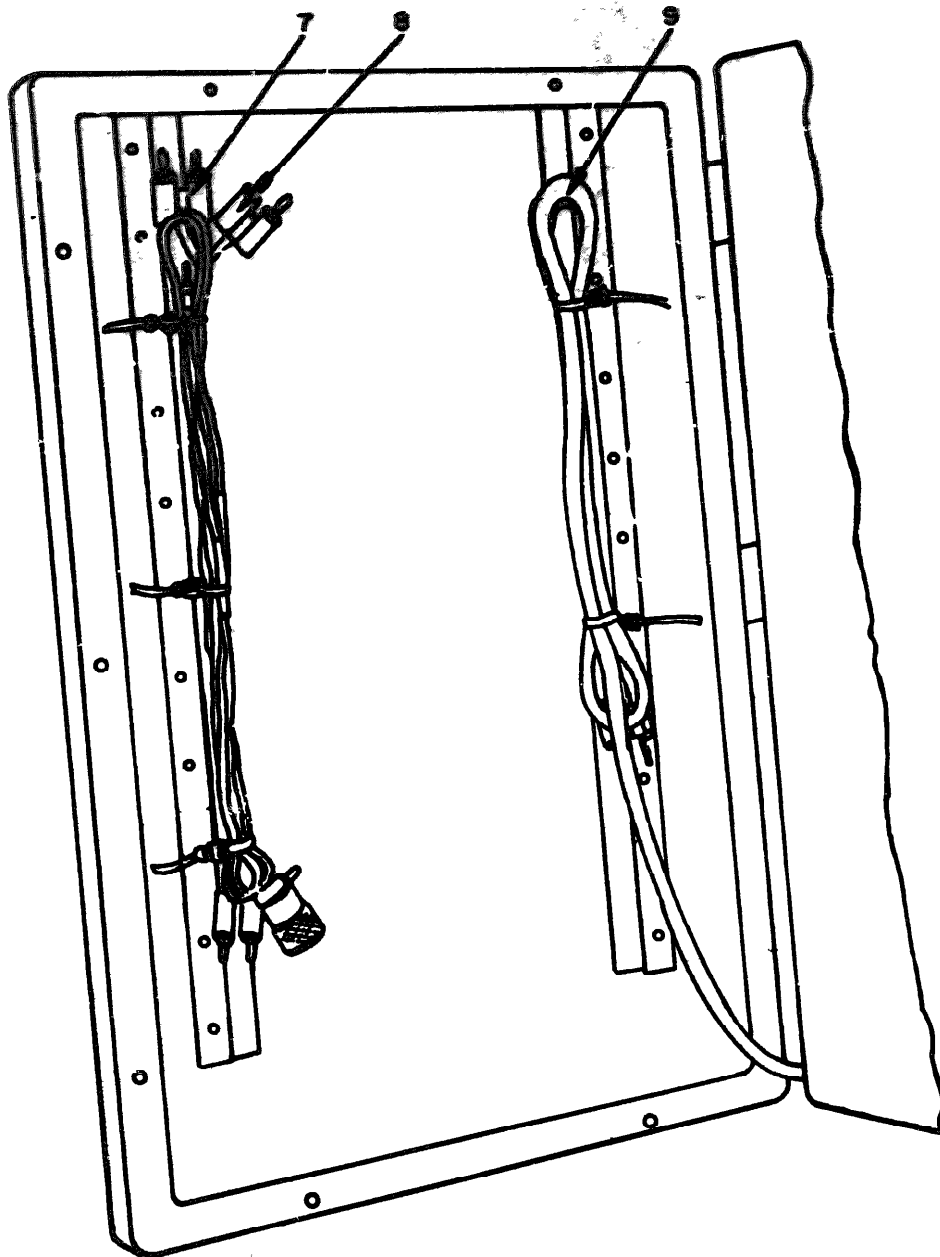


Figure 1 (1). Test Set, Noise Loading AN/GRM-66 (Sheet 1 of 2).

ELICDOOI



ELICD002

Figure 1 (2) • Test Set, Noise Loading AN/GRM-66 (Sheet 2 of 2).

GROUP		DESCRIPTION		QUANTITY		UNIT	
NO.	NAME	NO.	NAME	NO.	NAME	NO.	NAME
GROUP 00 TEST SET, NOISE LOADING 487229-65							
1	1	TEST SET	7221250-0000	0000	TEST SET, NOISE LOADING	EA	1
GROUP 01 TEST SET, NOISE LOADING 487229-65							
1	2	PAGE	5355-00-556-6151	0000	END	EA	1
1	3	PAGE	5355-00-556-0215	0000	END	EA	2
1	4	PAGE	6125-00-935-5268	0000	AMPLIFIER	EA	1
1	5	PAGE	6210-00-685-1121	0000	LAMP, NEON	EA	1
1	6	PAGE	5320-00-225-6179	0000	FOOT, CANNON	EA	1
1	7	PAGE	6625-00-995-2297	0000	CABLE ASSEMBLY, SPECIAL PURPOSE	EA	1
1	8	PAGE	6625-00-935-2596	0000	CABLE ASSEMBLY, SPECIAL PURPOSE	EA	1
1	9	PAGE	450766-511	4000	CABLE ASSEMBLY, POWER ELECTRICAL	EA	1

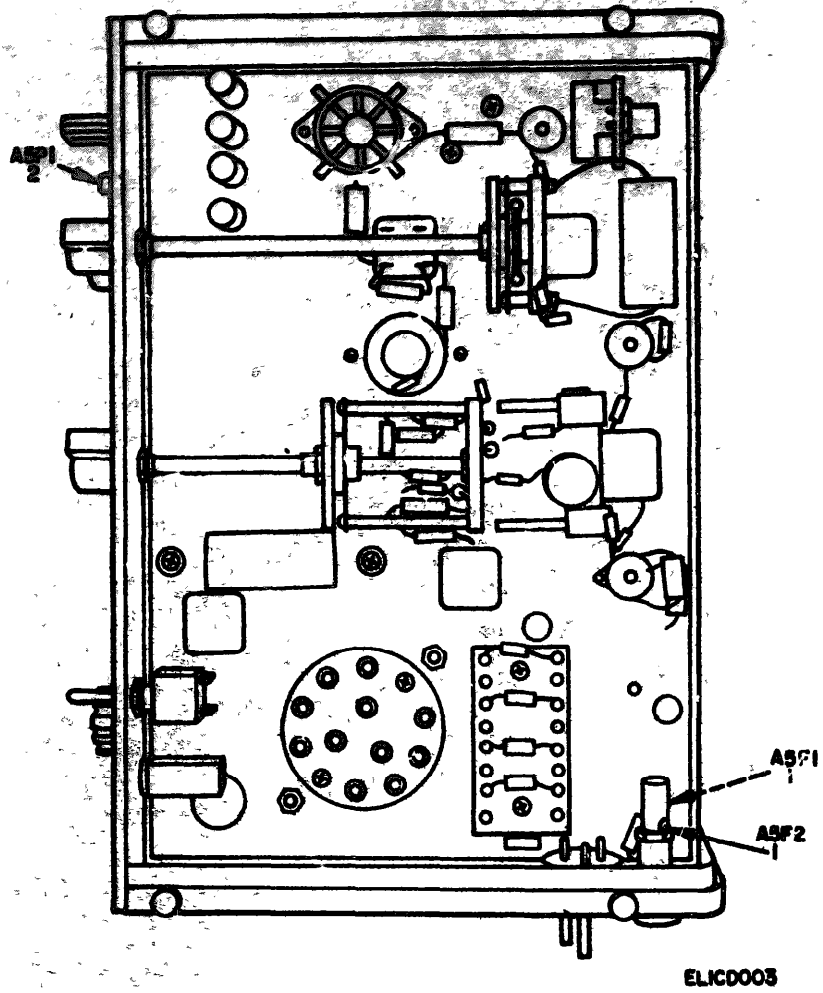


Figure 2. Noise Generator 1390B (5A2).

SECTION II

TM 11-6625-660-20P

QUANTITY		PART CODE	NATIONAL STOCK NUMBER	PART NAME	PART NO.	DESCRIPTION	SCALE ON CODE	UNIT	QTY
REQ. NO.	ISS. NO.								
GROUP 4102 DIESE GENERATOR 15000 (512)									
2	1	74021	5320-00-155-1422	FIELD-CA	71400	FUSE, CARTRIDGE		EA	2
2	2	74022	6240-00-057-2567	44	24445	FELT LINE		EA	1

SECTION IV

NATIONAL STOCK NUMBER AND PART NUMBER INDEX

TM 11-6625-660-20P

NOTE: LATEST NATIONAL STOCK NUMBER ASSIGNMENTS ARE LISTED AT END OF INDEX

<u>STOCK NUMBER</u>	<u>FIG. NO.</u>	<u>ITEM NO.</u>	<u>STOCK NUMBER</u>	<u>FIG. NO.</u>	<u>ITEM NO.</u>
6210-00-662-3411	2	2	5355-00-556-0151	1	2
6625-00-535-0162	1	1	6210-00-662-3411	1	5
6625-00-535-2597	2	1	6625-00-535-0162	1	4
6625-00-535-2598	1	3	6625-00-535-2597	1	7
			6625-00-535-2598	1	6

<u>PART NUMBER</u>	<u>FIG. NO.</u>	<u>ITEM NO.</u>	<u>PART NUMBER</u>	<u>FIG. NO.</u>	<u>ITEM NO.</u>
MS5152S-1E2B	1	4	96906	1	3
ME51PI	1	7	24435	1	5
24435	1	8	80052	1	1
44	1	6	24446	2	2
8507268-501	2	1	49671	1	9
71400	1	2			
96906	1	2			

LATEST NATIONAL STOCK NUMBER ASSIGNMENTS

5920-00-227-6179 1 6

RECOMMENDED CHANGES TO EQUIPMENT TECHNICAL MANUALS



SOMETHING WRONG WITH THIS MANUAL?

THEN... JOT DOWN THE DOPE ABOUT IT ON THIS FORM, TEAR IT OUT, FOLD IT AND DROP IT IN THE MAIL!

FROM: (YOUR UNIT'S COMPLETE ADDRESS)

Commander
Stateside Army Depot
ATTN: ANSTA-US
Stateside, N.J. 07703

DATE 10 July 1975

PUBLICATION NUMBER

TM 11-5840-340-12

DATE

23 Jan 74

TITLE

Radar Set AN/SPS-76

BE EXACT... PIN-POINT WHERE IT IS

PAGE NO.

2-25

PARA-GRAPH

2-28

FIGURE NO.

TABLE NO.

IN THIS SPACE TELL WHAT IS WRONG AND WHAT SHOULD BE DONE ABOUT IT:

Recommend that the installation antenna alignment procedure be changed through to specify a 2° IFF antenna lag rather than 1°.

REASON: Experience has shown that with only a 1° lag, the antenna servo system is too sensitive to wind gusting in excess of 15 knots, and has a tendency to rapidly accelerate and decelerate as it hunts, causing strain to the drive train. Hunting is minimized by adjusting the lag to 2° without degradation of operation.

3-10

3-3

3-1

Item 5, Function column. Change "2 db" to "3db."

REASON: The adjustment procedure for the TRANS POWER FAULT indicator calls for a 3 db (500 watts) adjustment to light the TRANS POWER FAULT indicator.

5-6

5-8

Add new step f.1 to read, "Replace cover plate removed in step e.1, above."

REASON: To replace the cover plate.

FO3

Zone C 3. On J1-2, change "+24 VDC to "+5 VDC."

REASON: This is the output line of the 5 VDC power supply. + 24 VDC is the input voltage.

TYPED NAME, GRADE OR TITLE, AND TELEPHONE NUMBER

SSG L. M. DeSpirito 999-1776

SIGN HERE:

SSG L. M. DeSpirito

DA FORM 2028-2 (TEST) 1 AUG 74

P.S.--IF YOUR OUTFIT WANTS TO KNOW ABOUT YOUR MANUAL "FIXED," MAKE A CARBON COPY OF THIS AND GIVE IT TO YOUR HEADQUARTERS.

HISA 1686-75

TEAR ALONG DOTTED LINE

RECOMMENDED CHANGES TO EQUIPMENT TECHNICAL MANUALS



THEN... JOT DOWN THE DOPE ABOUT IT ON THIS FORM, TEAR IT OUT, FOLD IT AND DROP IT IN THE MAIL!

SOMETHING WRONG WITH THIS MANUAL?

FROM: (YOUR UNIT'S COMPLETE ADDRESS)

DATE

PUBLICATION NUMBER

DATE

TITLE

BE EXACT... PIN-POINT WHERE IT IS

IN THIS SPACE TELL WHAT IS WRONG AND WHAT SHOULD BE DONE ABOUT IT:

PAGE NO.

PARA-GRAPH

FIGURE NO.

TABLE NO.

TEAR ALONG DOTTED LINE

TYPED NAME, GRADE OR TITLE, AND TELEPHONE NUMBER

SIGN HERE:

DA FORM 2028-2 (TEST)
1 AUG 74

P.S.—IF YOUR OUTFIT WANTS TO KNOW ABOUT YOUR MANUAL "FIND," MAKE A CARBON COPY OF THIS AND GIVE IT TO YOUR HEADQUARTERS.

FILL IN YOUR
UNIT'S ADDRESS

FOLD BACK

DEPARTMENT OF THE ARMY

POSTAGE AND FEES PAID
DEPARTMENT OF THE ARMY
DOD 314



OFFICIAL BUSINESS
PENALTY FOR PRIVATE USE \$300

Commander
US Army Electronics Command
ATTN: DRSEL-MA-Q
Fort Monmouth, New Jersey 07703

CUT ALONG DOTTED LINE

FOLD BACK

REVERSE OF DA FORM 3028-2 (TEST)

RECOMMENDED CHANGES TO EQUIPMENT TECHNICAL MANUALS



SOMETHING WRONG WITH THIS MANUAL?

THEN... JOT DOWN THE DOPE ABOUT IT ON THIS FORM, TEAR IT OUT, FOLD IT AND DROP IT IN THE MAIL!

FROM: (YOUR UNIT'S COMPLETE ADDRESS)

DATE

PUBLICATION NUMBER

DATE

TITLE

BE EXACT... PIN-POINT WHERE IT IS

IN THIS SPACE TELL WHAT IS WRONG AND WHAT SHOULD BE DONE ABOUT IT:

PAGE NO.

PARA-GRAPH

FIGURE NO.

TABLE NO.

TEAR ALONG DOTTED LINE

TYPED NAME, GRADE OR TITLE, AND TELEPHONE NUMBER

SIGN HERE:

DA FORM 2028-2 (TEST)
1 AUG 54

P.S.--IF YOUR OUTFIT WANTS TO KNOW ABOUT YOUR MANUAL "FIND" MAKE A CARBON COPY OF THIS AND GIVE IT TO YOUR HEADQUARTERS.

FILL IN YOUR
UNIT'S ADDRESS

FOLD BACK

DEPARTMENT OF THE ARMY

POSTAGE AND FEES PAID
DEPARTMENT OF THE ARMY
BOD 314



OFFICIAL BUSINESS
PENALTY FOR PRIVATE USE \$300

Commander
US Army Electronics Command
ATTN: DRSEL-MA-Q
Fort Monmouth, New Jersey 07703

CUT ALONG DOTTED LINE

FOLD BACK

REVERSE OF DA FORM 2026-2 (TEST)

RECOMMENDED CHANGES TO EQUIPMENT TECHNICAL MANUALS

SOMETHING WRONG WITH THIS MANUAL?



THEN...JOT DOWN THE DOPE ABOUT IT ON THIS FORM, TEAR IT OUT, FOLD IT AND DROP IT IN THE MAIL!

FROM: (YOUR UNIT'S COMPLETE ADDRESS)

DATE

PUBLICATION NUMBER

DATE

TITLE

BE EXACT...PIN-POINT WHERE IT IS

PAGE NO.	PARA-GRAPH	FIGURE NO.	TABLE NO.
----------	------------	------------	-----------

IN THIS SPACE TELL WHAT'S WRONG AND WHAT SHOULD BE DONE ABOUT IT:

TEAR ALONG DOTTED LINE

TYPED NAME, GRADE OR TITLE, AND TELEPHONE NUMBER

SIGN HERE:

DA FORM 2028-2 (TEST)
1 AUG 74

P.S.—IF YOUR OUTFIT WANTS TO KNOW ABOUT YOUR MANUAL "FIND," MAKE A CARBON COPY OF THIS AND GIVE IT TO YOUR HEADQUARTERS.

**FILL IN YOUR
UNIT'S ADDRESS**

FOLD BACK

DEPARTMENT OF THE ARMY

**OFFICIAL BUSINESS
PENALTY FOR PRIVATE USE \$300**

**POSTAGE AND FEES PAID
DEPARTMENT OF THE ARMY
DOD 314**



Commander
US Army Electronics Command
ATTN: DRSEL-MA-Q
Fort Monmouth, New Jersey 07703

CUT ALONG DOTTED LINE

FOLD BACK

REVERSE OF DA FORM 2026-2 (TEST)

By Order of the Secretary of the Army:

Official:

PAUL T. SMITH
Major General, United States Army
The Adjutant General

FRED C. WEYAND
General, United States Army
Chief of Staff

DISTRIBUTION:

To be distributed in accordance with DA Form 12-51, organizational maintenance requirements for AN/CRM-66.

DEPARTMENT OF THE ARMY
US ARMY AG PUBLICATIONS CENTER
1433 WOODSON ROAD
ST. LOUIS, MISSOURI 63114
OFFICIAL BUSINESS
PENALTY FOR PRIVATE USE \$300

POSTAGE AND FEES PAID
DEPARTMENT OF THE ARMY
DOD 314

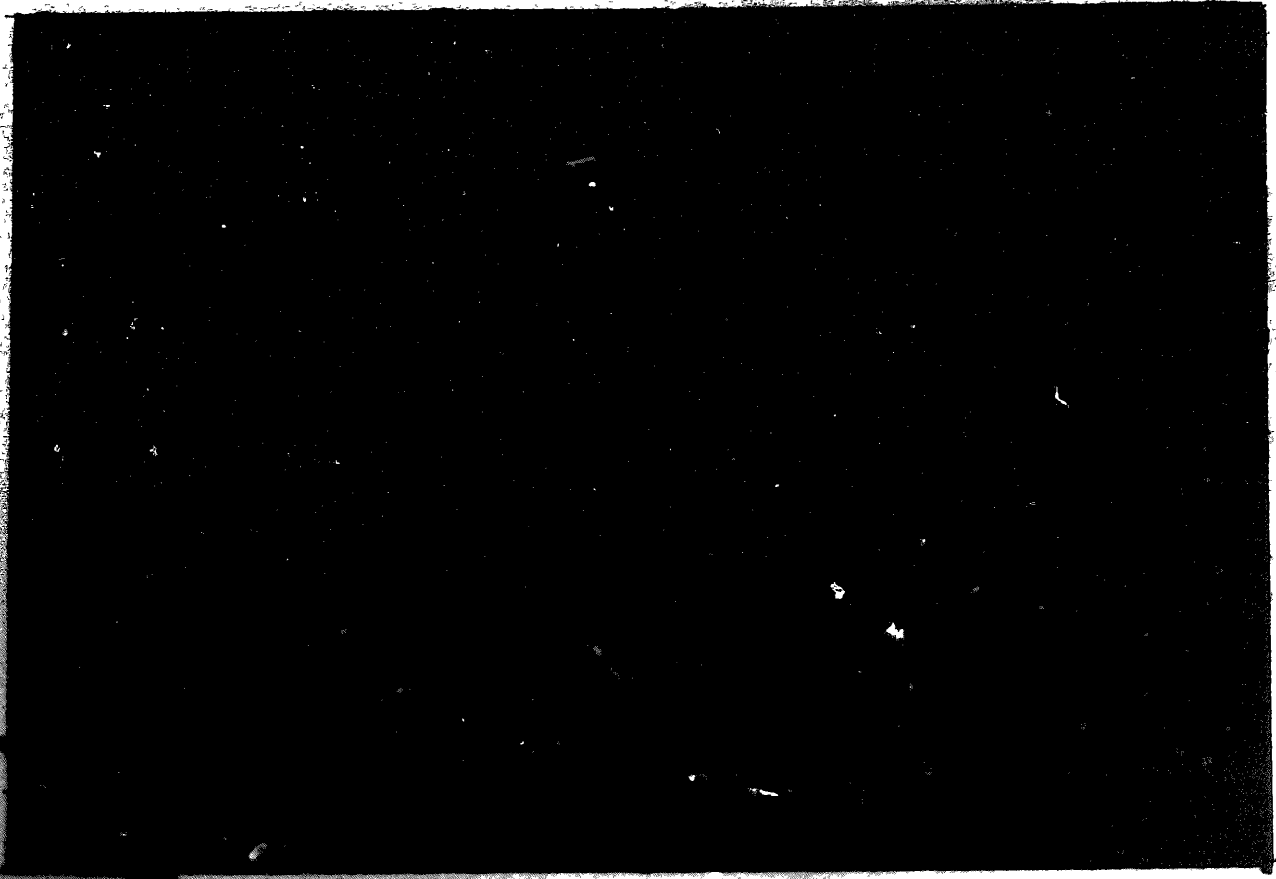


END

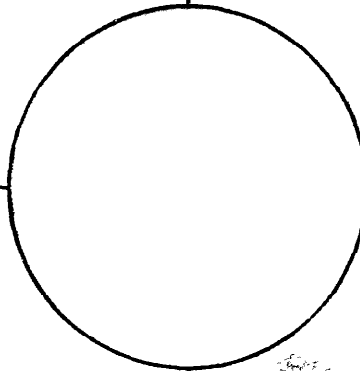
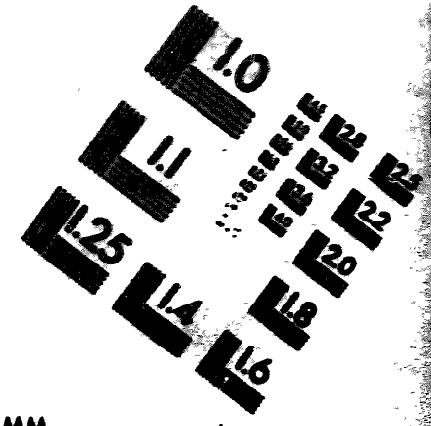
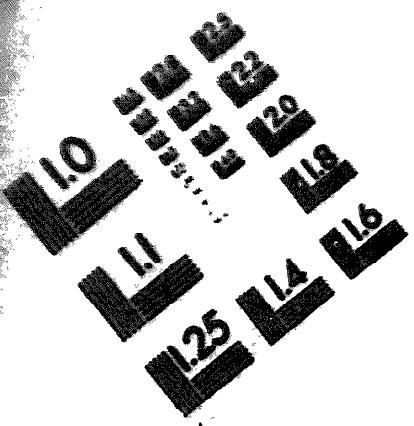
03-20-83

DATE





DEPARTMENT OF THE ARMY
MICROFORM
TEST TARGET



1.0 mm (e= .51 mm)

ABCDEFGHIJKLMN OPQRSTUVWXYZ 1234567890
abcdefghijklmnopqrstuvwxyz %& # 1/2 1/4 1/8 → x&@*

1.5 mm (e= 1.09 mm)

ABCDEFGHIJKLMN OPQRSTUVWXYZ 1234567890
abcdefghijklmnopqrstuvwxyz %& # 1/2 1/4 1/8 → x&@*

2.0 mm (e= 1.37 mm)

ABCDEFGHIJKLMN OPQRSTUVWXYZ
abcdefghijklmnopqrstuvwxyz
1234567890 \$e% / % # 1/2 1/4 1/8 → x&@*

2.5 mm (e= 1.77 mm)

ABCDEFGHIJKLMN OPQRSTUVWXYZ
abcdefghijklmnopqrstuvwxyz
1234567890 \$e% / % # 1/2 1/4 1/8 → x&@*

1.0 mm (e= .51 mm)

ABCDEFGHIJKLMN OPQRSTUVWXYZ 1234567890
abcdefghijklmnopqrstuvwxyz %& # 1/2 1/4 1/8 → x&@*

1.5 mm (e= 1.09 mm)

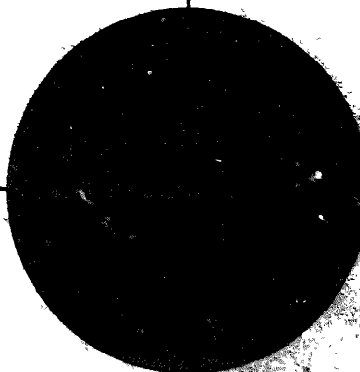
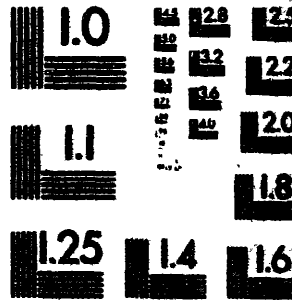
ABCDEFGHIJKLMN OPQRSTUVWXYZ 1234567890
abcdefghijklmnopqrstuvwxyz %& # 1/2 1/4 1/8 → x&@*

2.0 mm (e= 1.37 mm)

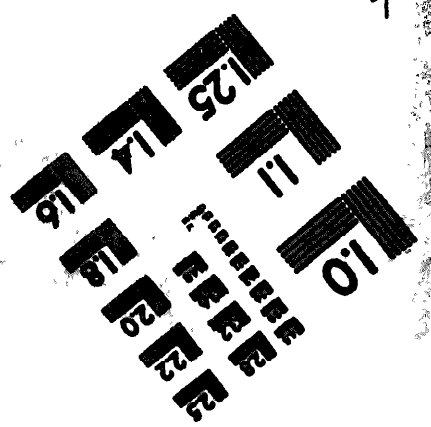
ABCDEFGHIJKLMN OPQRSTUVWXYZ
abcdefghijklmnopqrstuvwxyz
1234567890 \$e% / % # 1/2 1/4 1/8 → x&@*

2.5 mm (e= 1.77 mm)

ABCDEFGHIJKLMN OPQRSTUVWXYZ
abcdefghijklmnopqrstuvwxyz
1234567890 \$e% / % # 1/2 1/4 1/8 → x&@*



200 MM



250 MM